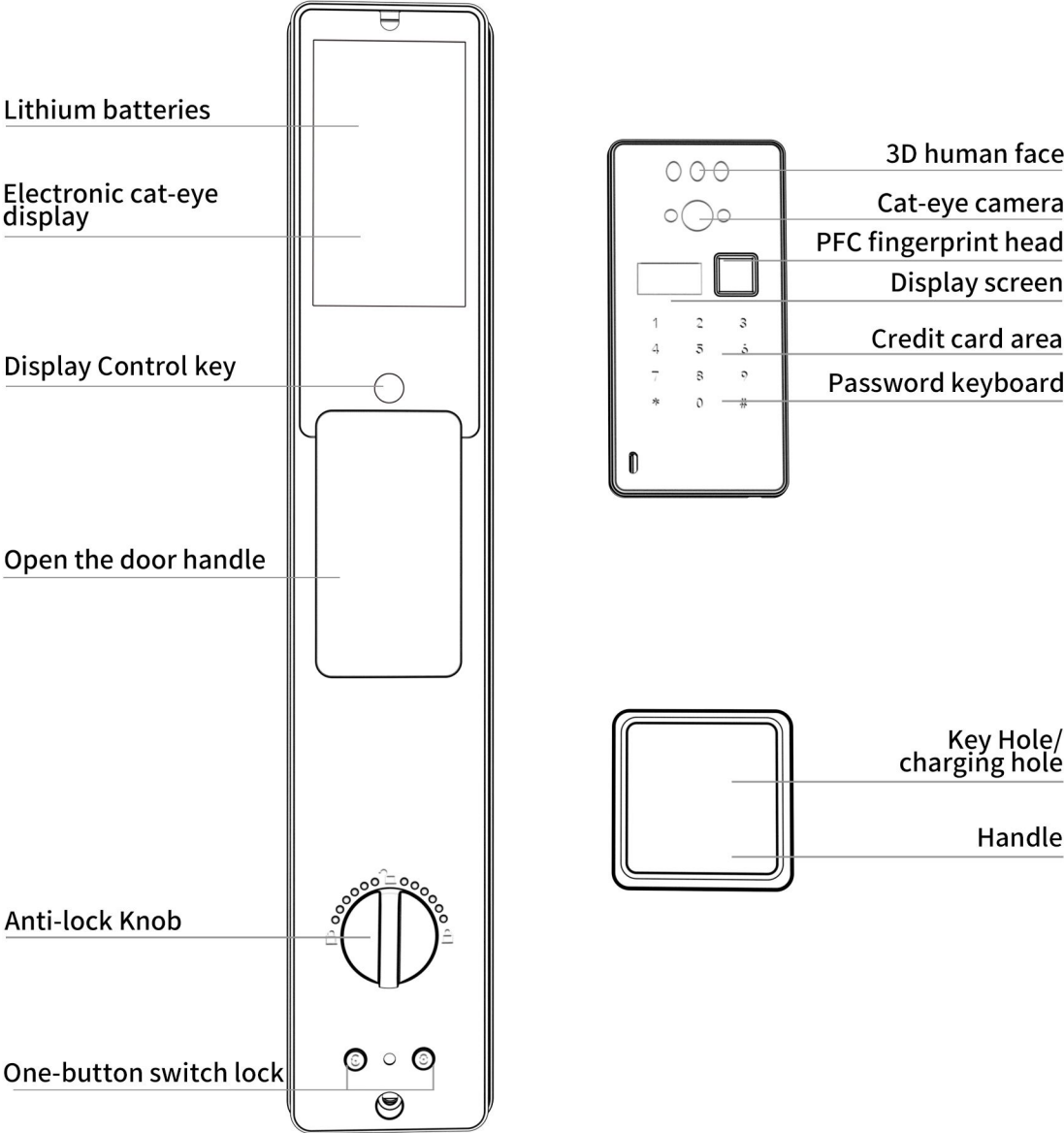


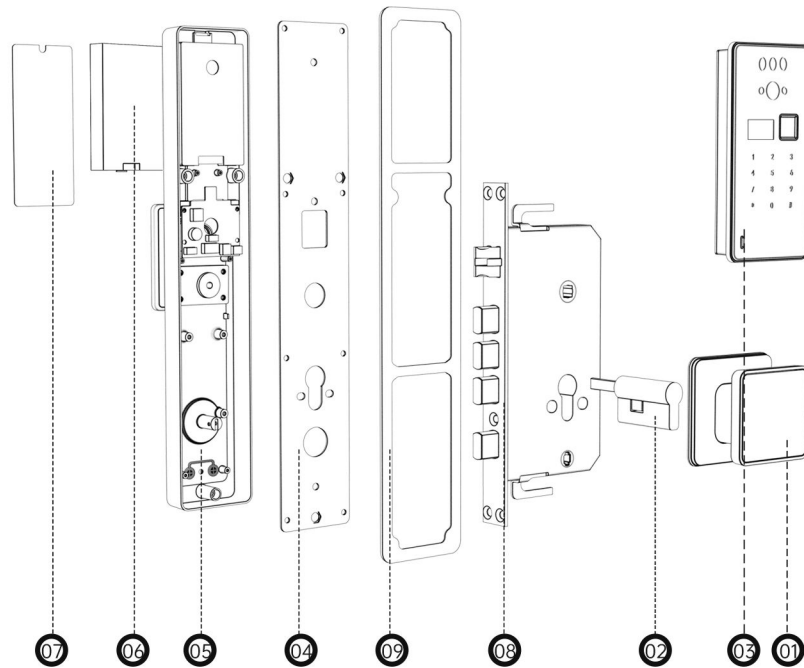
# Video intercom cat eye lock operation and networking instructions

## Chapter 1: Introduction to Product Performance



## Chapter 2: Structure Diagram of Fully Automatic Smart Lock

Introduce to you the installation method of our company's fingerprint lock. Due to the complexity of the installation of the smart lock, please be sure to read it carefully.



No	Name	Quantity
01	Handle	1
02	Lock cylinder	1
03	Smart Lock	1
04	Rear bottom plate	1
05	Rear panel assy	1
06	Lithium battery	1
07	Battery cover	1
08	Lock body	1
09	Rubber pads	1

## Chapter 3: Installation Instructions

3.1 Install the lock body first, and fix the lock body with M5 \*10 screws (4 pieces).

3.2 Install the lock cylinder, fix the lock cylinder with M5\*65 screws (1 pieces), and ensure that the copper bar shaft of the lock cylinder faces the room.

Recommended length of copper bar shaft is: exposed door plane 18~20 mm (after the lock cylinder must be installed, measure the exposed length, mark it and then cut the copper strip).

3.3 Install the fixing post and the silicone pad on the back of the front lock face.

3.4 The rear cover plate (with silicone pad) is fixed on the door together with the fixing column on the front lock surface through M5 screws.

3.5 Connect the connecting wires of the front and rear lock surfaces , then install the spring, square column, align the lock ruler , square column, and the hole of the lock core copper strip, install the rear lock surface, and fix it with M4\*22 screws (4 pieces).

3.6 Install the lithium battery, cover the battery cover, and the installation is complete.

## Chapter 4: Function Setting Instructions

### 1. Matters needing attention

- 1 When leaving the factory, any fingerprint, IC card or face can open the door.
- 2 When using, please press \*# to set the administrator password. The administrator password is the highest level password, please keep it safe!
- 3 The mechanical key is recommended to be kept in a safe place outdoors.

### 2. System initialization (restore to factory settings)

1 Press and hold the "Unlock" and "Lock" keys on the rear panel at the same time, and then touch the wake-up panel for about 6 seconds, the indicator light is on, and the screen displays: whether to restore the factory settings, press the " # " pound key to confirm the restore to the factory settings, after a few seconds the factory reset is successful, the lock returns to the factory state, and any fingerprint or face can open the door.

2 After initialization, the system password defaults to "123456" (the system default password "123456" is automatically deleted after the administrator password is entered).

3 Shortcut keys: 1919# to switch the unlocking direction; 0909# to configure the WIFI network; 1818# to switch the first and second lock bodies.

#### Overview

door key	quantity	illustrate
administrator	5	Administrator privileges can add or delete ordinary users (including ordinary user rights)
ordinary user	150	Ordinary users can be fingerprint, password, IC card , mobile app, face
mechanical key	2	Use when the battery is dead or the system fails

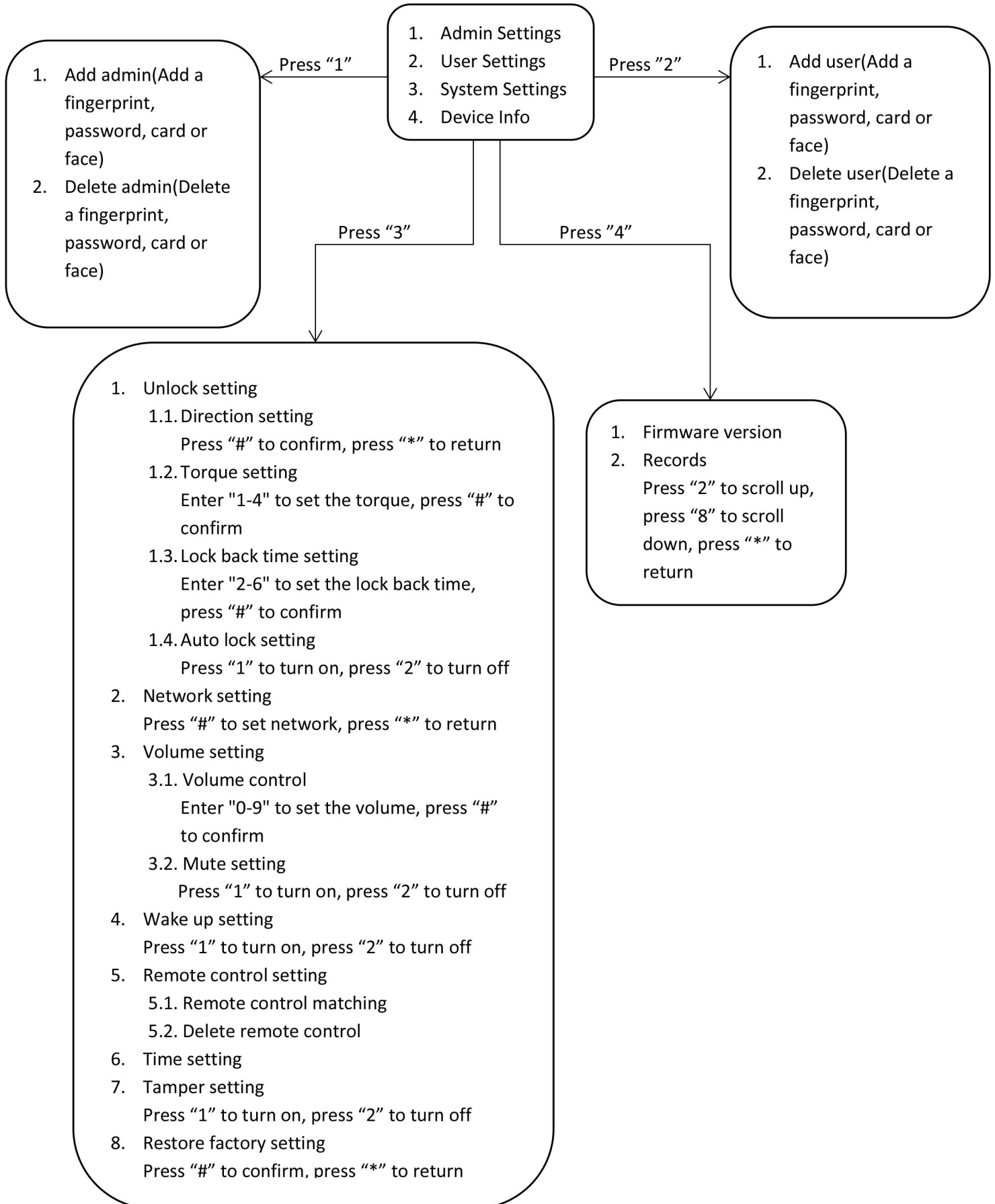
1. 12 touch keys 0-9, \*, #, support any key to wake up.
2. Press "\*" to delete the password during password registration and verification. In other interfaces, it means return.
3. Press "#" in the main interface, it means the doorbell button. Indicates the confirmation button when in the menu.
4. 0.96 inch OLED screen display, pixel 128x64 for menu navigation display.
5. Support anti disassembly alarm.
6. Voice navigation prompt, support doorbell function, # key is the doorbell multiplexing function key.
7. Real-time clock, the clock is lost after the battery is removed.
8. Semiconductor fingerprint module.
9. Support M1 card unlock function.
10. 5 administrator fingerprints, 5 administrator passwords, 5 administrator cards, and 5 administrator faces.
11. 30 user fingerprints, 45 user passwords, 45 user cards, 30 user faces.
12. Support virtual password, anti-peeping function, no more than 20 characters.
13. Press and hold the "Unlock" and "Lock" keys for 6 seconds while initializing to restore factory settings.

- 14. Door opening records can be saved.
- 15. Support WeChat applet.



### 3. Operation interface description

" \* " asterisk key " # " pound key to enter the system



Note:

1. Administrators can enter the system menu to add new users and set other functions, ordinary users can only unlock.
2. If the lock is opened and closed in the opposite direction, and there is no administrator, press 1919# to switch the direction, and when there is an administrator, go to "System Settings -> Unlock Settings -> Direction Settings" to switch the motor direction.
3. If the unlocking force is not enough, you can enter "System Settings -> Unlock Settings -> Torque Settings" to adjust the unlocking force. (The greater the torque value, the greater the power consumption)
4. Turn on the automatic lock, and automatically lock back after 20 seconds.
5. "System Settings -> Wake-up Settings" can turn on or off the radar body detection wake-up.